

Hong Kong - Zhuhai - Macau Bridge Hong Kong Boundary Crossing Facilities - The Road Connection Between HKBCF and the Airport, Chek Lap Kok

Management Organization

October 2025

This page left intentionally blank for pagination.

Mott MacDonald
3/F Manulife Place
348 Kwun Tong Road
Kwun Tong
Kowloon
Hong Kong

T +852 2828 5757
mottmac.hk

Airport Authority Hong Kong

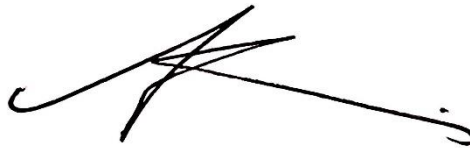
Hong Kong - Zhuhai - Macau Bridge Hong Kong Boundary Crossing Facilities - The Road Connection Between HKBCF and the Airport, Chek Lap Kok

Management Organization

October 2025

**This Submission of Management Organization has been
reviewed and certified by the Environmental Team Leader (ETL)
in accordance with Condition 2.3 of
Further Environmental Permit No. FEP-01/353/2009/K.**

Certified by:



Ken Wong
Environmental Team Leader (ETL)
Mott MacDonald Hong Kong Limited

Date 13 October 2025



AECOM
12/F, Grand Central Plaza, Tower
2, 138 Shatin Rural Committee
Road, Shatin, Hong Kong
香港新界沙田鄉事會路 138 號新城
市中央廣場第 2 座 12 樓
www.aecom.com

+852 3922 9000 tel
+852 3922 9797 fax

Our Ref : 60440482/C/JCHL251016

By Email

Airport Authority Hong Kong
HKIA Tower, 1 Sky Plaza Road
Hong Kong International Airport
Lantau, Hong Kong

Attn: Mr. Lawrence Tsui, Principal Manager, Environmental Compliance

16 October 2025

Dear Sir,

Hong Kong – Zhuhai – Macao Bridge Hong Kong Boundary Crossing Facilities – The Road Connection Between HKBCF and the Airport, Chek Lap Kok - Independent Environmental Checker Consultancy Services

Management Organization

We refer to the Management Organization submitted and certified by the ET Leader on 13 October 2025.

We would like to inform you that we have no adverse comment on the captioned submission. Therefore we write to verify the captioned submission in accordance with the requirement stipulated in Condition 2.3 of Further Environmental Permit No.: FEP-01/353/2009/K.

Should you have any query, please feel free to contact the undersigned at 3856 5312.

Yours faithfully,
AECOM Asia Co. Ltd.

Jackel Law
Independent Environmental Checker

Contents

1	Introduction	1
2	Management Organization of the Main Construction Company	2
3	Management Organization of the Environmental Team	3
4	Management Organization of the Independent Environmental Checker	4
Appendix A.	Organization Chart of the Contractor	5
Appendix B.	Organization Chart of the ET and IEC	7

Tables

Table 2.1:	Contact Information of Key Personnel of Contractor	2
Table 3.1:	Contact Information of ET	3
Table 4.1:	Contact Information of IEC	4

1 Introduction

In accordance with Section 12 of the Environmental Impact Assessment Ordinance (EIAO), a Further Environmental Permit (EP No. FEP-01/353/2009/K) for the construction of the road connection between Hong Kong-Zhuhai-Macao Bridge (HZMB) Hong Kong Boundary Crossing Facilities (HKBCF) and the Airport, Chek Lap Kok (hereinafter referred to as “the Project”) was granted to Airport Authority Hong Kong (AAHK) in December 2018.

Pursuant to Condition 2.3 of the FEP, AAHK should inform the Director of Environmental Protection (the Director) in writing the management organization of the main construction companies and/or any form of joint ventures associated with the construction of the corresponding part of the Project.

The Management Organization includes the following information:

- a) The management organization of the main construction companies and/or any form of joint ventures associated with the construction of the Project (in **Section 2**),
- b) The management organization of the Environmental Team (ET) (in **Section 3**),
- c) The management organization of the Independent Environmental Checker (IEC) (in **Section 4**), and
- d) Organization charts, names of responsible persons, and their contact details.

2 Management Organization of the Main Construction Company

Gammon Engineering & Construction Company Limited is appointed to undertake the construction work of the Project. The names of the responsible persons and their contact details of the contractor are set out in **Table 2.1** below.

Table 2.1: Contact Information of Key Personnel of Contractor

Party	Position	Name	Telephone	Email
Gammon Engineering & Construction Limited	Project Director	Richard Ellis	6201 5637	Richard.Ellis@gammonconstruction.com
	Environmental Officer	Carrie Kwan	9276 0551	KaHei.Kwan@gammonconstruction.com

Appendix A presents the organization chart of the contractor as required under FEP Condition 2.3.

3 Management Organization of the Environmental Team

The name and contact details of the Environmental Team (ET) Leader are set out in **Table 3.1** below:

Table 3.1: Contact Information of ET

Position	Name	Telephone	Email
ET Leader	Ken Wong	2828 5817	Ken.Wong@mottmac.com

Appendix B presents an organization chart of the ET as required under FEP Condition 2.3.

4 Management Organization of the Independent Environmental Checker

The name and contact details of the Independent Environmental Checker (IEC) are set out in **Table 4.1** below:

Table 4.1: Contact Information of IEC

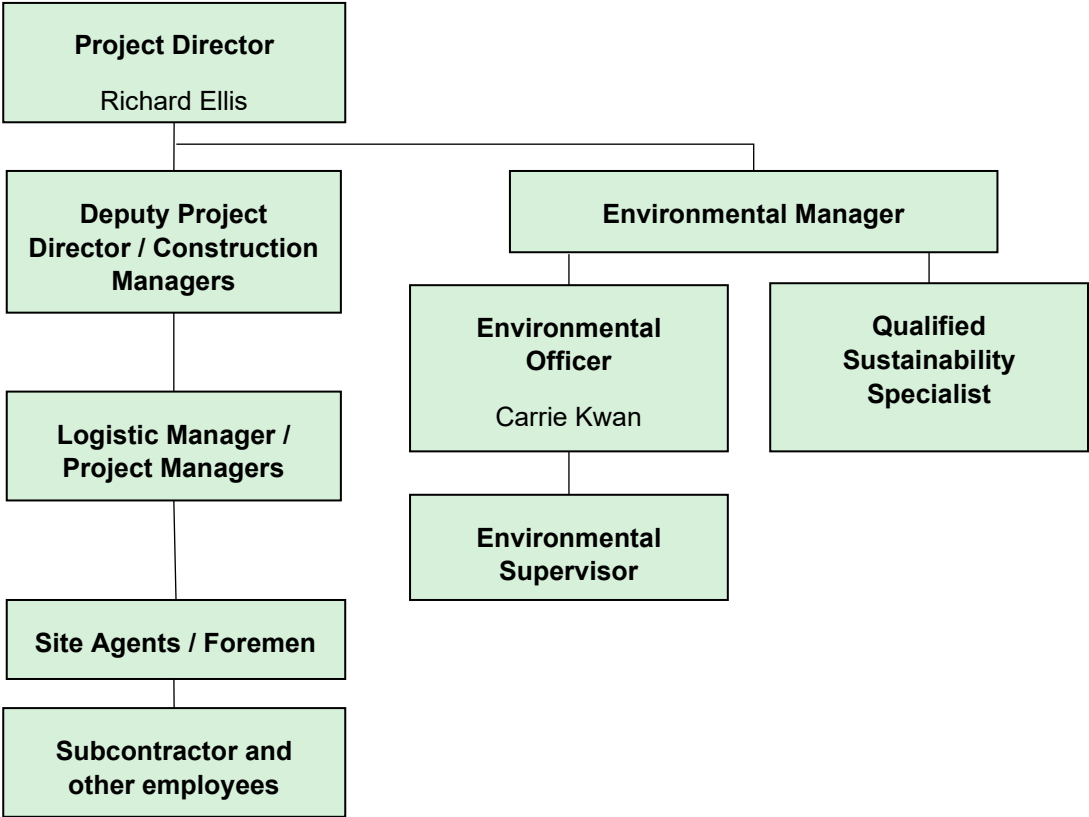
Position	Name	Telephone	Email
IEC	Jackel Law	3856 5312	Jackel.Law@aecom.com

Appendix B presents an organization chart of the IEC as required under FEP Condition 2.3.

Appendix A. Organization Chart of the Contractor

Management Organization

Organization Chart of Gammon Engineering & Construction Company Limited



Appendix B. Organization Chart of the ET and IEC

Management Organization

Organization Chart of ET and IEC

