



**Hong Kong - Zhuhai - Macao  
Bridge Hong Kong Boundary  
Crossing Facilities -  
The Road Connection  
Between HKBCF and the  
Airport, Chek Lap Kok**

Management Organization

October 2022

Mott MacDonald  
3/F Manulife Place  
348 Kwun Tong Road  
Kwun Tong  
Kowloon  
Hong Kong

T +852 2828 5757  
mottmac.hk

Airport Authority Hong Kong

# **Hong Kong - Zhuhai - Macao Bridge Hong Kong Boundary Crossing Facilities - The Road Connection Between HKBCF and the Airport, Chek Lap Kok**

Management Organization

October 2022

**This Submission of Management Organization has been  
reviewed and certified by the Environmental Team Leader (ETL)  
in accordance with Condition 2.3 of  
Further Environmental Permit No. FEP-01/353/2009/K.**

**Certified by:**



---

Heidi Yu  
Environmental Team Leader (ETL)  
Mott MacDonald Hong Kong Limited

Date 01 November 2022



AECOM +852 3922 9000 tel  
12/F, Grand Central Plaza, Tower +852 3922 9797 fax  
2, 138 Shatin Rural Committee  
Road, Shatin, Hong Kong  
香港新界沙田鄉事會路 138 號新城  
市中央廣場第 2 座 12 樓  
www.aecom.com

Our Ref : 60440482/C/JCHL221101

By Email

Airport Authority Hong Kong  
HKIA Tower, 1 Sky Plaza Road  
Hong Kong International Airport  
Lantau, Hong Kong

Attn: Mr. Lawrence Tsui, Principal Manager, Environmental Compliance

1 November 2022

Dear Sir,

**Hong Kong – Zhuhai – Macao Bridge Hong Kong Boundary Crossing Facilities – The Road Connection Between HKBCF and the Airport, Chek Lap Kok - Independent Environmental Checker Consultancy Services**

**Management Organization**

We refer to the Management Organization submitted and certified by the ET Leader on 1 November 2022.

We would like to inform you that we have no adverse comment on the captioned submission. Therefore we write to verify the captioned submission in accordance with the requirement stipulated in Condition 2.3 of Further Environmental Permit No.: FEP-01/353/2009/K.

Should you have any query, please feel free to contact the undersigned at 3922 9376.

Yours faithfully,  
AECOM Asia Co. Ltd.

Jackel Law  
Independent Environmental Checker

# Contents

1	Introduction	1
2	Management Organization of the Main Construction Company	2
3	Management Organization of the Environmental Team	3
4	Management Organization of the Independent Environmental Checker	4
Appendix A.	Organization Chart of the Contractor	5
Appendix B.	Organization Chart of the ET and IEC	7
<b>Tables</b>		
	Table 2.1: Contact Information of Key Personnel of Contractor	2
	Table 3.1: Contact Information of ET	3
	Table 4.1: Contact Information of IEC	4

# 1 Introduction

In accordance with Section 12 of the Environmental Impact Assessment Ordinance (EIAO), a Further Environmental Permit (EP No. FEP-01/353/2009/K) for the construction of the road connection between Hong Kong-Zhuhai-Macao Bridge (HZMB) Hong Kong Boundary Crossing Facilities (HKBCF) and the Airport, Chek Lap Kok (hereinafter referred to as “the Project”) was granted to Airport Authority Hong Kong (AAHK) in December 2018.

Pursuant to Condition 2.3 of the FEP, AAHK should inform the Director of Environmental Protection (the Director) in writing the management organization of the main construction companies and/or any form of joint ventures associated with the construction of the corresponding part of the Project.

The Management Organization includes the following information:

- a) The management organization of the main construction companies and/or any form of joint ventures associated with the construction of the Project (in **Section 2**),
- b) The management organization of the Environmental Team (ET) (in **Section 3**),
- c) The management organization of the Independent Environmental Checker (IEC) (in **Section 4**), and
- d) Organization charts, names of responsible persons, and their contact details.

## 2 Management Organization of the Main Construction Company

Gammon Engineering & Construction Company Limited is appointed to undertake the construction work of the Project. The names of the responsible persons and their contact details of the contractor are set out in **Table 2.1** below.

**Table 2.1: Contact Information of Key Personnel of Contractor**

Party	Position	Name	Telephone	Email
Gammon Engineering & Construction Limited	Project Director	Richard Ellis	6201 5637	Richard.Ellis@gammonconstruction.com
	Environmental Officer	Fanny Law	6184 4650	Fanny.PF.Law@gammonconstruction.com

**Appendix A** presents the organization chart of the contractor as required under FEP Condition 2.3.

### 3 Management Organization of the Environmental Team

The name and contact details of the Environmental Team (ET) Leader are set out in **Table 3.1** below:

**Table 3.1: Contact Information of ET**

Position	Name	Telephone	Email
ET Leader	Heidi Yu	2828 5704	Heidi.Yu@mottmac.com

**Appendix B** presents an organization chart of the ET as required under FEP Condition 2.3.



## 4 Management Organization of the Independent Environmental Checker

The name and contact details of the Independent Environmental Checker (IEC) are set out in **Table 4.1** below:

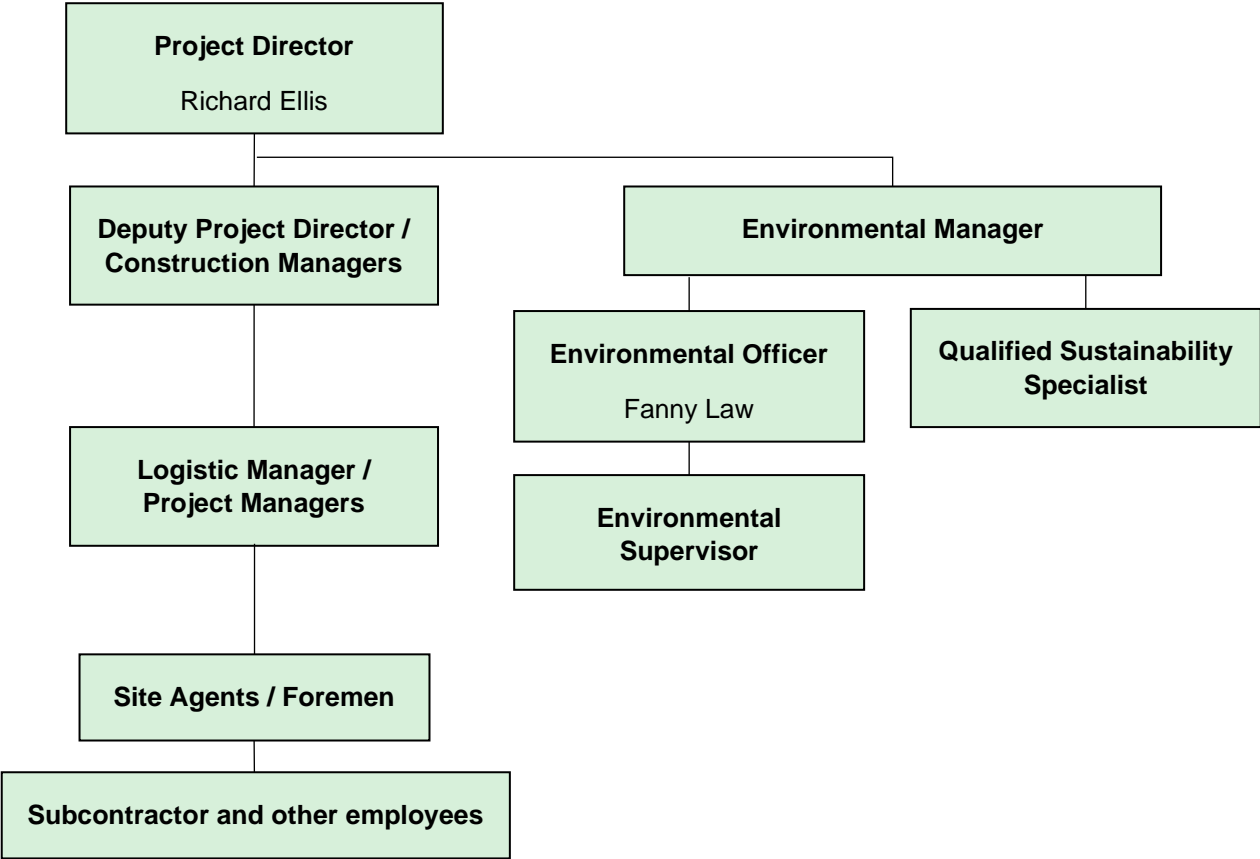
**Table 4.1: Contact Information of IEC**

Position	Name	Telephone	Email
IEC	Jackel Law	3922 9376	Jackel.Law@aecom.com

**Appendix B** presents an organization chart of the IEC as required under FEP Condition 2.3.

# **Appendix A. Organization Chart of the Contractor**

**Organization Chart of Gammon Engineering & Construction Company Limited**



# **Appendix B. Organization Chart of the ET and IEC**

**Organization Chart of ET and IEC**

